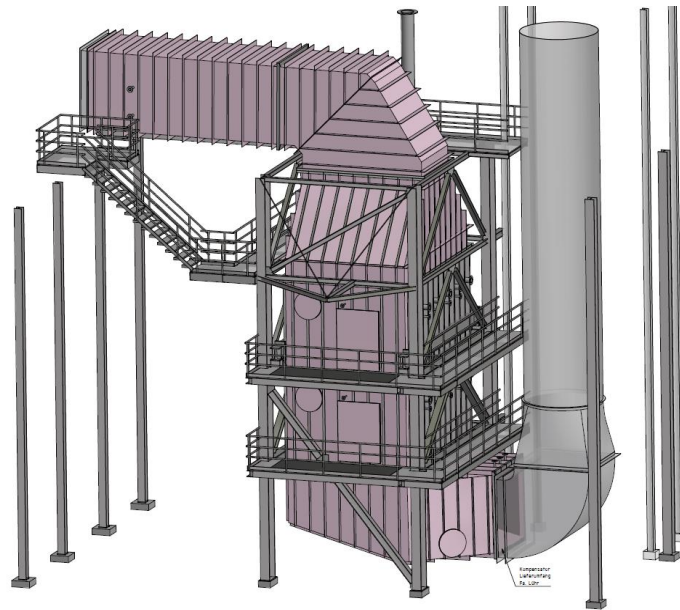


Client: ERC Technik GmbH
Project: SCR-plant for waste incineration plant in Delfzijl
Services: Basic engineering; technical drawings



General

The waste incineration plant in Delfzijl was to be fitted with a third incineration line equipped with an SCR-plant just like the other two existing lines.

Under a basic engineering contract, planning work was to be performed, particularly installation planning and preliminary structural analysis.

Scope of services provided by T&N

The scope of services provided by T&N were essentially:

- Process engineering design of the SCR-catalyst
- Preliminary structural analysis for SCR-reactor including flue-gas ducts
- Preliminary structural analysis for steel substructure
- Installation drawings for coordinating the spatial requirements at the site and the interfaces to other trades
- Installation drawings on a scale of 1:50 using the 3D-Programm Inventor
- Preparation of load drawings taking into consideration dead loads, wind and earthquake loads, inter alia

The completed drawings were used as a basis for the tender documents and shop drawings.

The plant was to be built in 2017.

Results

